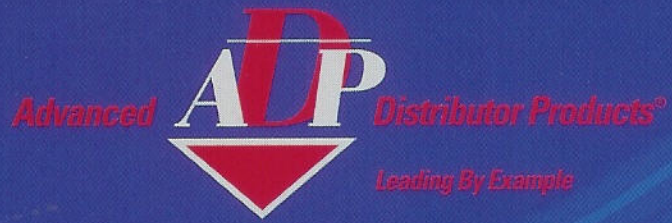


# BC Series Air Handlers



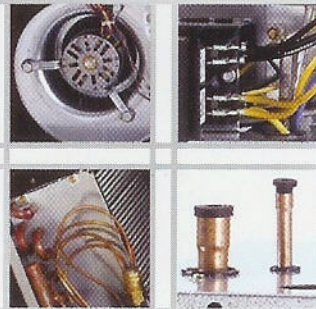
**5 Year  
Warranty**





# BC Series Air Handlers

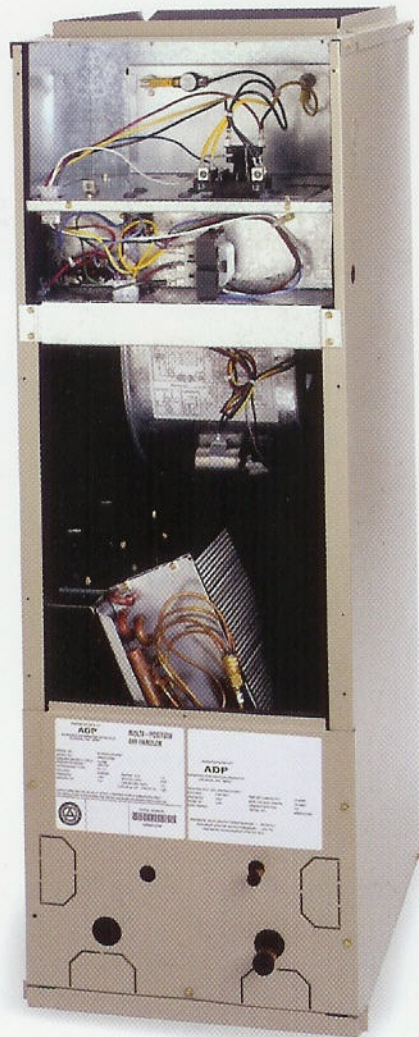
**ADP Evaporator Coils and Air Handlers are manufactured in a 375,000 sq. ft. facility located in Grenada, MS. ADP's state-of-the-art facility offers ISO-9002 certified operations and an ETL approved Research and Development Center. This facility is another example of ADP's commitment to providing consistently high quality products for it's customers.**



## Common Features

- Flatorator, bleed or non-bleed A/C or HP expansion valve available factory installed, including R410a. Expansion valves also available as a kit for field installation.
- Filter rack with filter for bottom return - side return rack available for slant coil models.
- All coils are individually pressure tested at 450 psi, then pressurized and sealed.
- Cabinet constructed of pre-painted heavy gauge steel to prevent corrosion. Lined with high quality 1" mat faced insulation.
- All field installed kits come with thorough easy to follow instructions.
- Rifled copper tubing.
- Patented lance fin design.
- Ratings in conformity with ARI Standard 210.
- Drain pans are molded of corrosion proof engineering polymer.
- Available voltages, 120 or 208/240-60-1.
- All Air Handlers are top handling (basiloid) packaged with bar coding and full description on label.
- Cooling fan time delay available as kit or factory installed.
- Easy to follow wiring diagrams on all Air Handlers.
- Dynamically balanced blowers for quiet vibration free operation.
- High efficiency 3 speed motors.
- Available from factory as dedicated upflow or upflow/horizontal. Field installed horizontal drain pan kit is also available.
- Five year warranty on coils and parts. See warranty form for details.



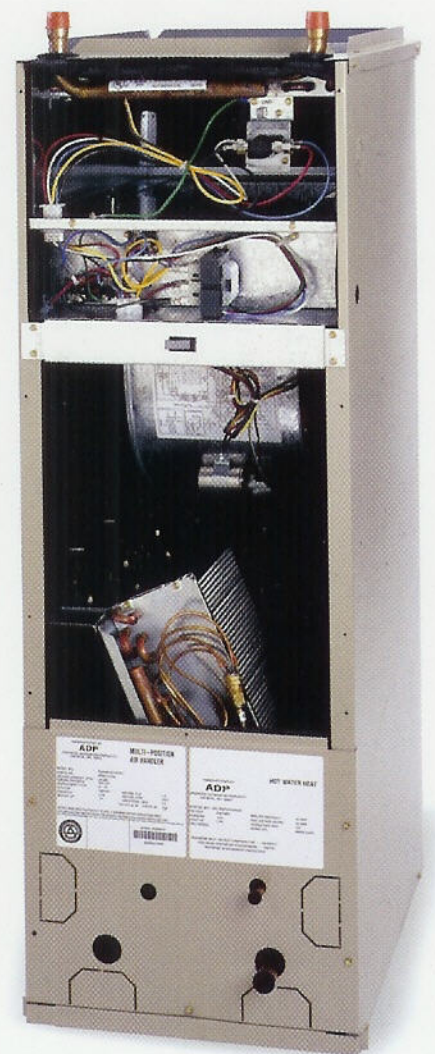


## Electric & No Heat Additional Features

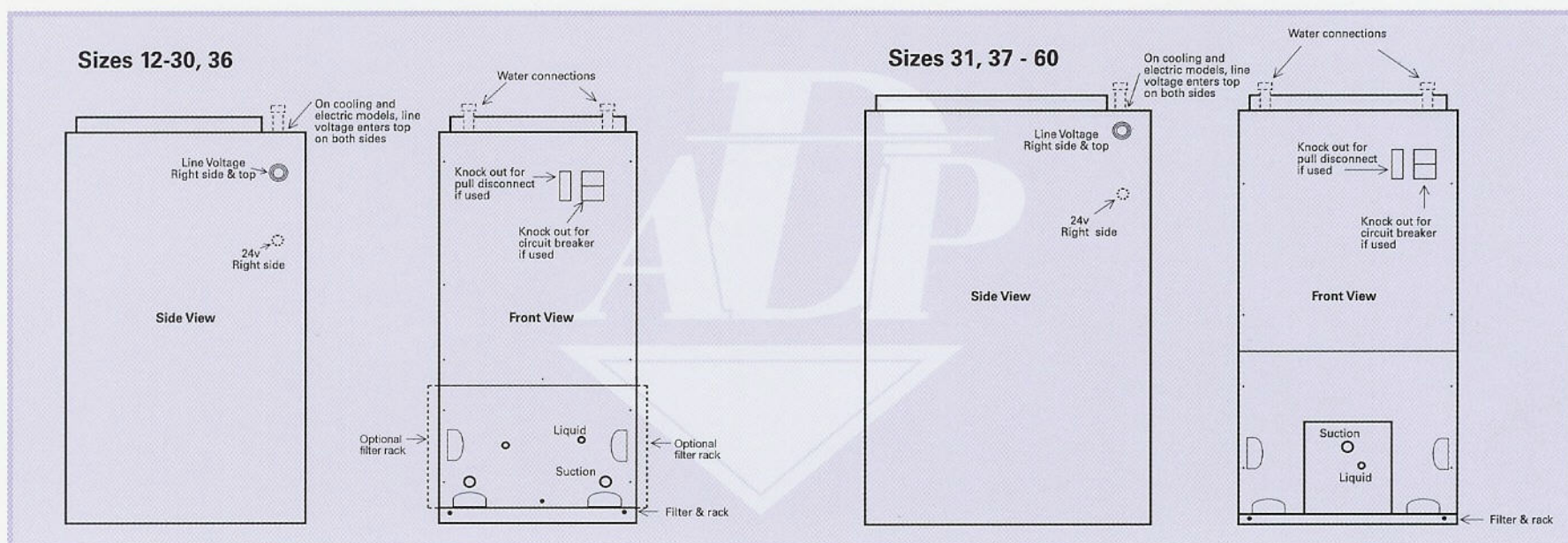
- Electrical connections can be made on top or right side.
- Electric heat available factory installed or in kit for field installation.
- Available voltages, 120 or 208/240-60-1.  
208/240-60-1 is only on electric heat models.
- Water coil kits with or without pump can be quickly installed in no heat models.

## Water Heat Additional Features

- Water heating coils available factory installed in 2, 3 or 4 row (with or without pump).
- Models include blower door safety switch as standard.
- Installation instructions include popular zone control connections for easy installation.
- Pump timer kit available for domestic water installations.



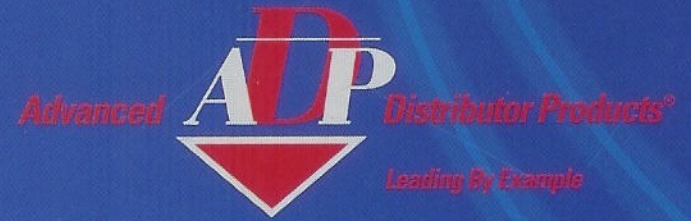
- Standard heating blower time delay. Allows water coil to warm before starting blower.
- Separate set of contacts on heating relay for external interface with boiler relay, zone valve, etc.
- If necessary, water coil easily slides out for replacement.





**ELECTRIC HEAT SIZES**

Size	kW (multiply the kW by 3413 for actual btuh output)								
	5	7.5	10	12.5	15	17.5	20	22.5	25
12	*								
18	*	*	*						
24	*	*	*	*					
25	*	*	*	*					
30	*	*	*	*	*	*			
31	*	*	*	*	*	*			
36	*	*	*	*	*	*	*	*	
37	*	*	*	*	*	*	*	*	
42		*	*	*	*	*	*	*	
48		*	*	*	*	*	*	*	*
49		*	*	*	*	*	*	*	*
60			*	*	*	*	*	*	*



For more information:

Phone 1-800-848-2270

Fax 770-465-5599

2175 West Park Place Blvd.

Stone Mountain, GA 30087

www.adpnow.com

**DIMENSIONS**

Size	Width	Depth	Height	Supply Duct Conn.		Return Duct Conn.		Air Filter Size
				Width	Depth	Width	Depth	
12	15"	22"	44"	13 1/2"	17"	10 1/4"	17 1/4"	12 x 20
18	15"	22"	44"	13 1/2"	17"	10 1/4"	17 1/4"	12 x 20
24	15"	22"	44"	13 1/2"	17"	10 1/4"	17 1/4"	12 x 20
25	18 1/2"	22"	48"	17"	17"	14"	17 1/4"	16 x 20
30	18 1/2"	22"	48"	17"	17"	14"	17 1/4"	16 x 20
31	20"	26"	49"	18 1/2"	21"	15 3/4"	22"	18 x 25
36	18 1/2"	22"	48"	17"	17"	14"	22"	16 x 20
37	20"	26"	49"	18 1/2"	21"	15 3/4"	22"	18 x 25
42	20"	26"	49"	18 1/2"	21"	15 3/4"	22"	18 x 25
48	20"	26"	49"	18 1/2"	21"	15 3/4"	22"	18 x 25
49	22"	26"	53"	20 1/2"	21"	17 3/4"	22"	20 x 25
60	22"	26"	53"	20 1/2"	21"	17 3/4"	22"	20 x 25

**SPECIFICATIONS**

Size	DX Coil Type	Available Voltages	Motor HP	Motor Amps		Nominal CFM	Refrigerant Conn.		Drain Conn.	Water Conn.
				120	208/240		Suc.	Liq.		
12	Slant	120 or 208/240 1Ph.	1/5	2.0	1.1	400	3/4"	3/8"	3/4" FPT	7/8" ODF
18	Slant	120 or 208/240 1Ph.	1/5	2.0	1.1	600	3/4"	3/8"	3/4" FPT	7/8" ODF
24	Slant	120 or 208/240 1Ph.	1/5	3.7	1.9	800	3/4"	3/8"	3/4" FPT	7/8" ODF
25	Slant	120 or 208/240 1Ph.	1/3	4.2	2.2	800	3/4"	3/8"	3/4" FPT	7/8" ODF
30	Slant	120 or 208/240 1Ph.	1/3	4.2	2.2	1000	3/4"	3/8"	3/4" FPT	7/8" ODF
31	"A"	120 or 208/240 1Ph.	1/3	5.6	2.6	1000	7/8"	3/8"	3/4" FPT	1 1/8" ODF
36	Slant	120 or 208/240 1Ph.	1/3	5.6	2.6	1200	3/4"	3/8"	3/4" FPT	7/8" ODF
37	"A"	120 or 208/240 1Ph.	1/3	5.6	2.6	1200	7/8"	3/8"	3/4" FPT	1 1/8" ODF
42	"A"	120 or 208/240 1Ph.	1/2	5.6	3.0	1400	7/8"	3/8"	3/4" FPT	1 1/8" ODF
48	"A"	120 or 208/240 1Ph.	1/2	8.5	4.0	1600	7/8"	3/8"	3/4" FPT	1 1/8" ODF
49	"A"	120 or 208/240 1Ph.	3/4	9.0	4.3	1600	7/8"	3/8"	3/4" FPT	1 1/8" ODF
60	"A"	120 or 208/240 1Ph.	3/4	9.0	4.3	2000	7/8"	3/8"	3/4" FPT	1 1/8" ODF



<sup>(1)</sup>Electric heat models only available in 208/240 1 Ph.

**WATER HEAT CAPACITIES**

Size	GPM	120°F			140°F			180°F		
		2 Row	3 Row	4 Row	2 Row	3 Row	4 Row	2 Row	3 Row	4 Row
12	2	11,639	14,528		16,452	20,495		26,217	32,564	
	3	12,536	15,582		17,683	21,942		28,091	34,771	
18	2	13,997	17,826		19,823	25,194		31,687	40,145	
	3	15,396	19,636		21,757	27,701		34,659	44,014	
24	2	15,683	20,160		22,240	28,524		35,621	45,532	
	3	17,552	22,659		24,793	32,004		39,573	50,947	
25	2	17,227	21,309		24,529	30,149		39,359	48,121	
	3	19,588	24,501		27,747	33,970		44,360	54,007	
30	3	20,523	26,156		29,072	36,982		46,482	58,963	
	4	22,035	28,187		31,163	39,801		49,705	63,331	
31	3		28,726	33,478		40,610	47,246		64,735	75,121
	4		31,055	36,193		43,847	51,024		69,759	80,995
36	3	21,997	28,137		31,155	39,809		49,872	63,537	
	4	23,750	30,578		33,616	43,208		53,678	68,827	
37	3		31,014	36,329		43,874	51,301		70,015	81,645
	4		33,856	39,751		47,838	56,080		76,197	89,117
42	4		36,190	42,707		51,167	60,284		81,575	95,879
	5		38,464	45,457		54,329	64,115		86,486	101,845
48	4		40,722	45,204		53,996	63,834		86,149	101,952
	5		39,807	48,409		57,617	68,310		91,792	108,588
49	4		39,807	46,837		56,267	66,098		89,678	105,091
	5		42,517	50,156		60,046	70,734		95,569	112,342
60	4		43,229	51,065		61,145	72,104		97,555	114,739
	5		46,570	55,271		65,818	77,999		104,879	124,009